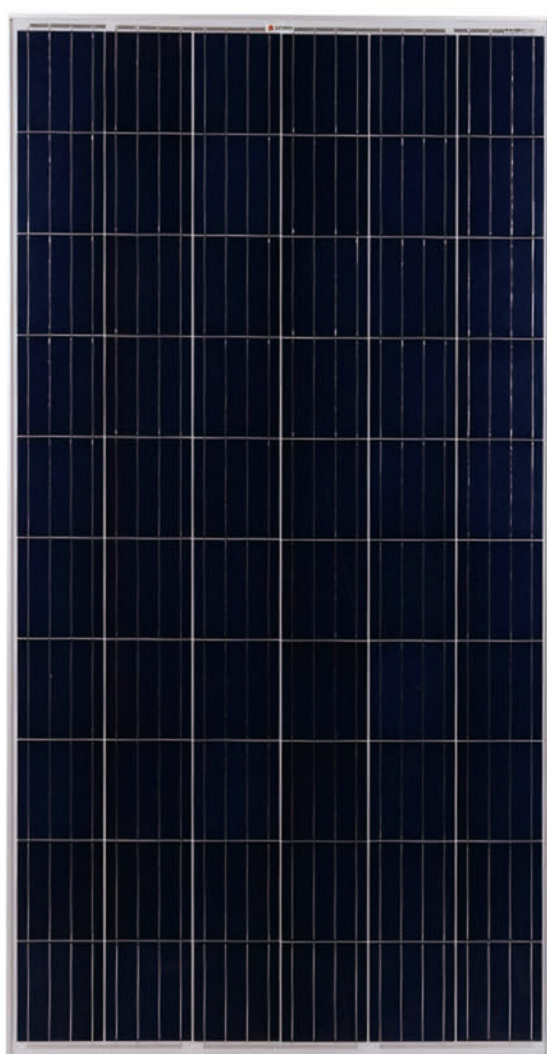


**Polycrystalline Silicon Solar Panel**  
**OS-P60-270W**  
**Framed 60-cell module**  
**Range:250-270W**

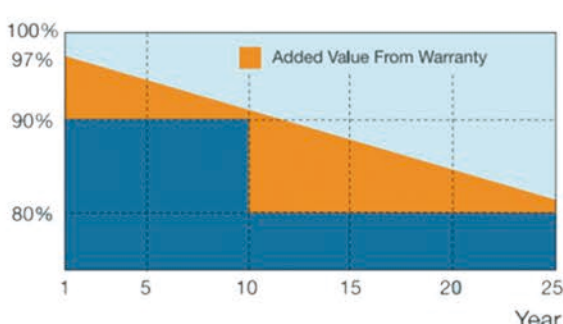


**KEY FEATURES**

-  **PID RESISTANT**
-  **High Power Output**
-  **High transmission, low Iron Tempered Glass**
-  **Bypass Diodes Protection**
-  **Salt Mist And Ammonia Resistance Test**

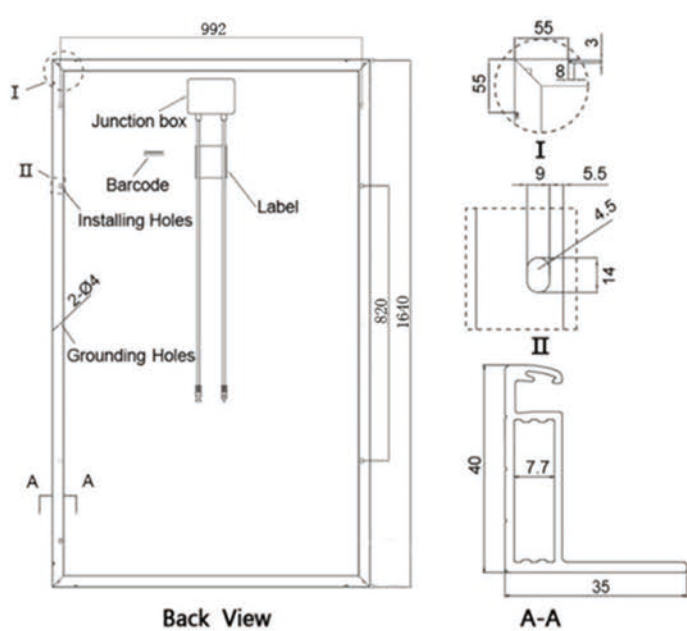
**Superior Warranty**

- 12-year product warranty
- 25-year linear power output warranty



HeHebei Oushang Photovoltaic Technology Co., Ltd. Add: Dazhao Industrial Zone, Ningjin, Hebei Province, China  
 Tel: +86 0311-80979366 Fax: +86 0311-80979388 Website: www.oushangsolar.com

**DIMENSIONS**



**MECHANICAL CHARACTERISTICS**

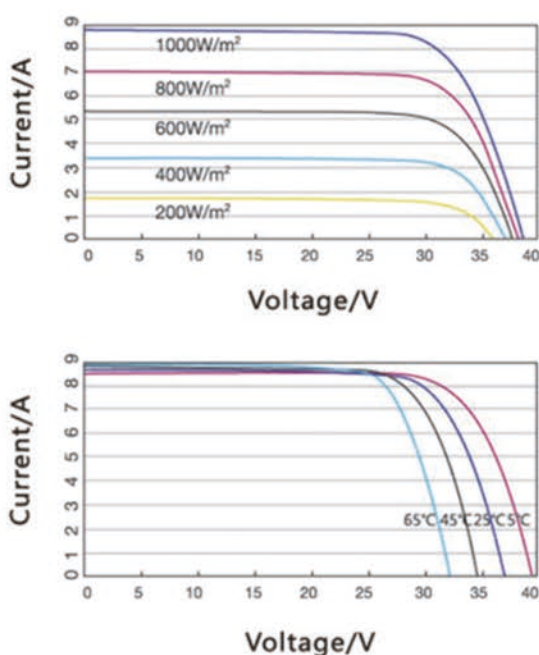
Frame Material	Anodized Aluminium Alloy
Front Glass	Tempered Glass
Back Cover	TPT(Composite film)
Cell Encapsulant	EVA
Junction box	IP67
Cables	2.5mm <sup>2</sup> ,1000mm
Connector	MC4
Max wind load	2400Pa
Max snow load	5400Pa

**TEMPERATURE COEFFICIENT**

NOCT	47°C(±2°C)
Temperature Coefficient of Pmax	-0.45%/°C
Temperature Coefficient of Voc	-0.35%/°C
Temperature Coefficient of Isc	0.05%/°C
Operating Temperature	-40°C ~ +85°C

STC:Irradiance 1000w/m<sup>2</sup>, Cell temperature 25°C,AM=1.5,Measuring tolerance:±3%

**I-V CURVES**



**ELECTRONICAL CHARACTERISTICS**

Module Type	OS-P60-250	OS-P60-260	OS-P60-270
Maximum Power(Pmax)	250W	260W	270W
Maximum Power Voltage(Vmp)	30.4V	31.02V	31.66V
Maximum Power Current(Imp)	8.22A	8.38A	8.69A
Open Circuit Voltage(Voc)	36.5V	38.05V	38.86V
Short Circuit Current(Isc)	9.21A	9.08A	9.22A
Number of Cells	60(6*10)	60(6*10)	60(6*10)
Size of Cells(mm)	156*156	156*156	156*156
Dimensions(mm)	1640*992*40	1640*992*40	1640*992*40
Power Tolerance	+(0-3)%		
Maximum System Voltage	1000VDC		

HeHebei Oushang Photovoltaic Technology Co., Ltd. Add: Dazhao Industrial Zone, Ningjin, Hebei Province, China  
 Tel: +86 0311-80979366 Fax: +86 0311-80979388 Website: www.oushangsolar.com